

SURFACE MOUNT SCHOTTKY BARRIER RECTIFIERS

SS22 - SS210



DO-214AA(SMB) Surface Mount Package

Polarity : Colour band denotes cathode

For use in Low Voltage, High Frequency Inverters, Free Wheeling and Polarity Protection Applications

MAXIMUM RATINGS AND ELECTRICAL CHARACTERISTICS

Rating at 25°C Ambient Temperature unless specified otherwise. single phase, half wave 60Hz, resistive or Inductive Load. For capacitive load, derate current by 20%

DESCRIPTION	SYMBOL	SS22	SS23	SS24	SS25	SS26	SS28	SS210	UNIT
Maximum Peak Repetitive Reverse Voltage	V _{RRM}	20	30	40	50	60	80	100	V
Maximum RMS Voltage	V _{RMS}	14	21	28	35	42	56	70	V
Maximum DC Blocking Voltage	V _{DC}	20	30	40	50	60	80	100	V
Maximum Average Forward Rectified Current at T _L =100°C	I _(AV)	2.0							A
Peak Forward Surge Current 8.3ms single half sine-wave super imposed on rated load	I _{FSM}	60							A
Maximum Forward Voltage at I _F =2.0A DC	V _F	0.45	0.55	0.6	0.7		0.85		V
Maximum DC Reverse Current at T _j =25°C at Rated DC Blocking Voltage T _j =100°C	I _R	1.0							mA
		20							mA
Typical Junction Capacitance	*C _J	200							pF
Thermal Resistance Junction to Lead	R _{th (j-L)}	TYP15							°C/W
Operating Junction Temperature Range	T _j	- 55 to +150							°C
Storage Temperature Range	T _{stg}	- 55 to +150							°C

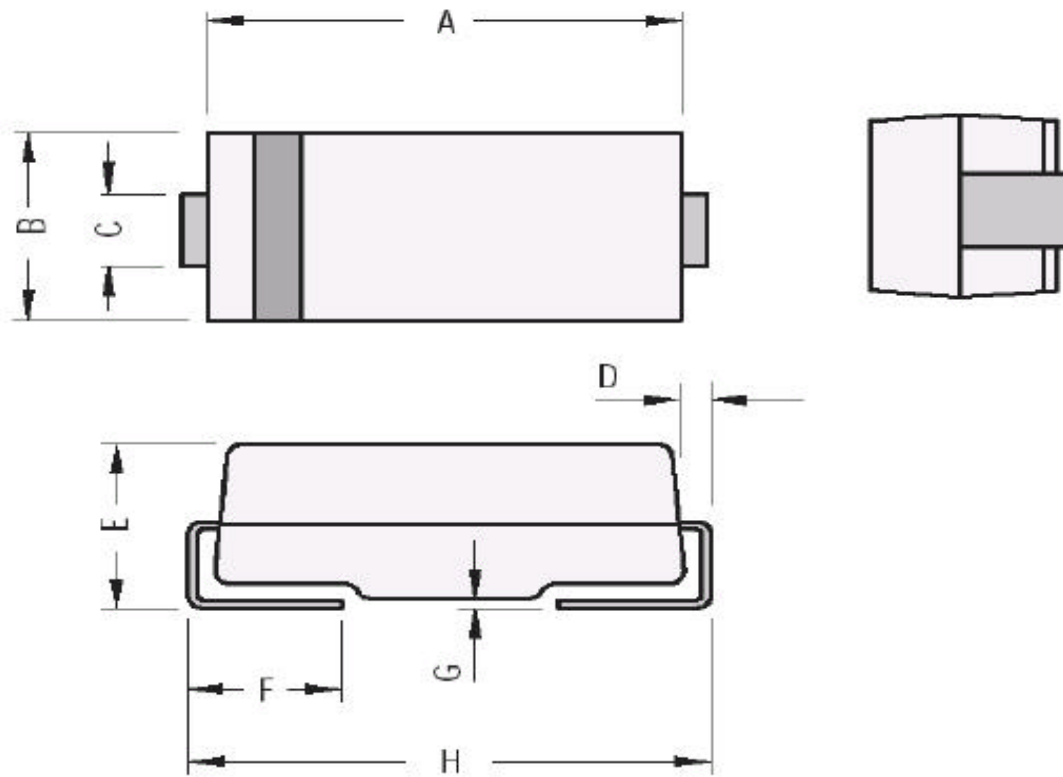
*Measured at 1.0 MHz and Applied Reverse Voltage of 4V DC

SS22_SS210Rev080307E

SS22 - SS210

**DO-214AA(SMB)
Surface Mount Package**

DO-214AA (SMB) SMD Plastic Package



DIM	Min	Max
A	4.06	4.57
B	3.30	3.94
C	1.96	2.11
D	0.152	0.305

DIM	Min	Max
E	2.13	2.44
F	0.76	1.52
G	0.102	0.203
H	5.21	5.59

All Dimensions are in mm

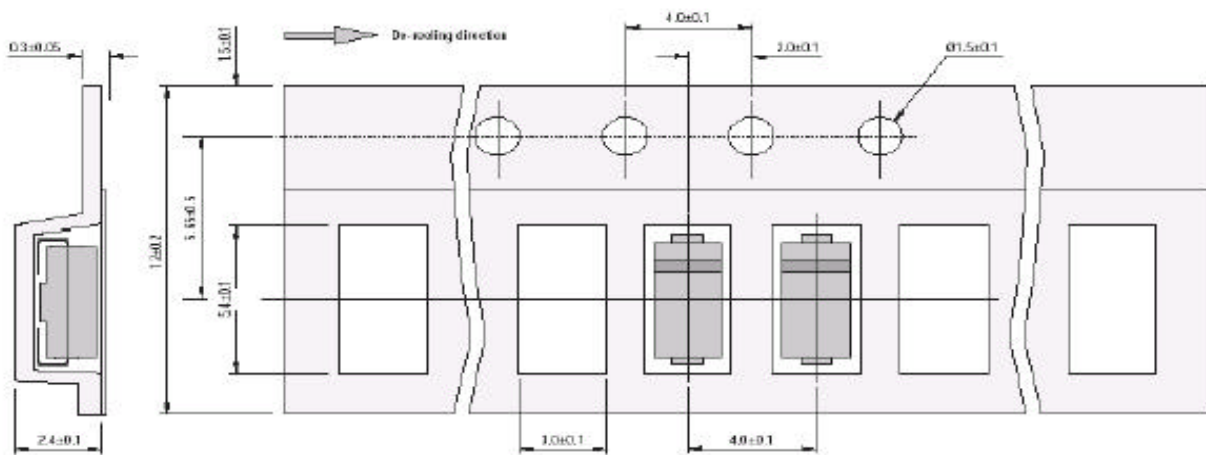


SS22_SS210Rev080307E

DO-214AA(SMB) Surface Mount Package

DO-214AA Package and Packaging

SMB Packing Tape



All Dimensions are in mm

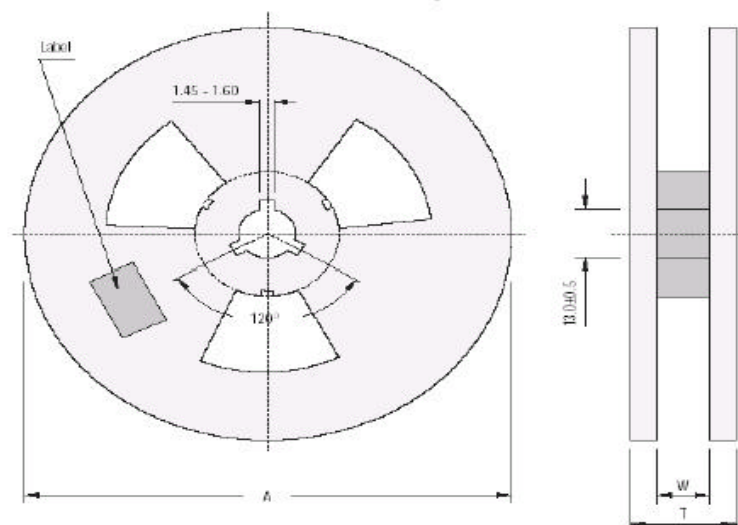
Packaging Information

Package/ Case Type	Packaging Type	Std. Packing	Inner Carton			Outer Carton		
			Qty	Size L x W x H	Gross Weight	Qty	Size L x W x H	Gross Weight
				(cm)	(Kg)		(cm)	(Kg)
DO-214AA (SMB)	T&R	5,000				50K	46 x 38 x 22	8.9

T & R: Tape and Reel

DO-214AA Package and Packaging

Reel Dimensions for SMD Package



Reel Specifications				
Package	Tape Width	Reel Dia.	Inside Thickness	Reel Thickness
DO-214AA (SMB)	12	A - Max	W	T - max
		330	12.4 ± 2	18.4

All Dimensions are in mm

Component Disposal Instructions

1. CDIL Semiconductor Devices are RoHS compliant, customers are requested to please dispose as per prevailing Environmental Legislation of their Country.
2. In Europe, please dispose as per EU Directive 2002/96/EC on Waste Electrical and Electronic Equipment (WEEE).

Disclaimer

The product information and the selection guides facilitate selection of the CDIL's Semiconductor Device(s) best suited for application in your product(s) as per your requirement. It is recommended that you completely review our Data Sheet(s) so as to confirm that the Device(s) meet functionality parameters for your application. The information furnished in the Data Sheet and on the CDIL Web Site/CD are believed to be accurate and reliable. CDIL however, does not assume responsibility for inaccuracies or incomplete information. Furthermore, CDIL does not assume liability whatsoever, arising out of the application or use of any CDIL product; neither does it convey any license under its patent rights nor rights of others. These products are not designed for use in life saving/support appliances or systems. CDIL customers selling these products (either as individual Semiconductor Devices or incorporated in their end products), in any life saving/support appliances or systems or applications do so at their own risk and CDIL will not be responsible for any damages resulting from such sale(s).

CDIL strives for continuous improvement and reserves the right to change the specifications of its products without prior notice.



CDIL is a registered Trademark of
Continental Device India Limited

C-120 Naraina Industrial Area, New Delhi 110 028, India.

Telephone + 91-11-2579 6150, 4141 1112 Fax + 91-11-2579 5290, 4141 1119
email@cdil.com www.cdilsemi.com