



Continental Device India Pvt. Limited

An IATF 16949, ISO9001 and ISO 14001 Certified Company

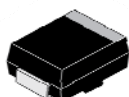


## SURFACE MOUNT ULTRA FAST RECTIFIERS

Reverse Voltage - 50 to 1000 Volts

Forward Current - 1.0 Ampere

US1A ~ US1M



DO-214AC (SMA)

DO-214AC (SMA)

Surface Mount

Plastic Package

RoHS compliant

### FEATURES:

1. The plastic package carries Underwriters Laboratory Flammability Classification 94V-0
2. For surface mounted applications
3. Ultra fast switching for high efficiency
4. Low reverse leakage
5. Built-in strain relief, ideal for automated placement
6. High forward surge current capability
7. High temperature soldering guaranteed 250°C/10 seconds at terminals

**APPLICATIONS:** Ultra fast Recovery time for high Efficiency

### ABSOLUTE MAXIMUM RATINGS (Ta = 25 °C Unless otherwise specified)

PARAMETER	SYMBOL	US 1A	US 1B	US 1D	US 1G	US 1J	US 1K	US 1M	UNIT
Maximum repetitive peak reverse voltage	V <sub>RRM</sub>	50	100	200	400	600	800	1000	V
Maximum RMS voltage	V <sub>RMS</sub>	35	70	140	280	420	560	700	V
Maximum DC blocking voltage	V <sub>DC</sub>	50	100	200	400	600	800	1000	V
Maximum average forward rectified current at T <sub>L</sub> =55°C	I <sub>(AV)</sub>	1.0							A
Peak forward surge current 8.3ms single half sine-wave superimposed on rated load	I <sub>FSM</sub>	30							A
Maximum instantaneous forward voltage at I <sub>F</sub> =1.0A	V <sub>F</sub>	1.0			1.3	1.7			V
Maximum DC reverse current T <sub>A</sub> =25°C	I <sub>R</sub>	5							μA
at rated DC blocking voltage T <sub>A</sub> =100°C		50							
Maximum reverse recovery time <sup>1</sup>	t <sub>rr</sub>	50				75			ns
Typical junction capacitance <sup>2</sup>	C <sub>J</sub>	17							pF
Typical thermal resistance <sup>3</sup>	R <sub>th(j-L)</sub>	30							°C/W
Operating junction and storage temperature range	T <sub>J</sub> , T <sub>STG</sub>	-65 to +150							°C

#### Note:

1. Reverse recovery condition  $I_F = 0.5\text{A}, I_R = 1.0\text{A}, I_{rr} = 0.25\text{A}$
2. Measured at 1MHz and applied reverse voltage of 4.0V D.C
3. P.C.B. mounted with 0.2x0.2" (5.0x5.0mm) copper pad areas

US1A\_1M

Rev02 15072021EEG

## TYPICAL CHARACTERISTICS CURVES

Fig 1: FORWARD CURRENT DERATING CURVE

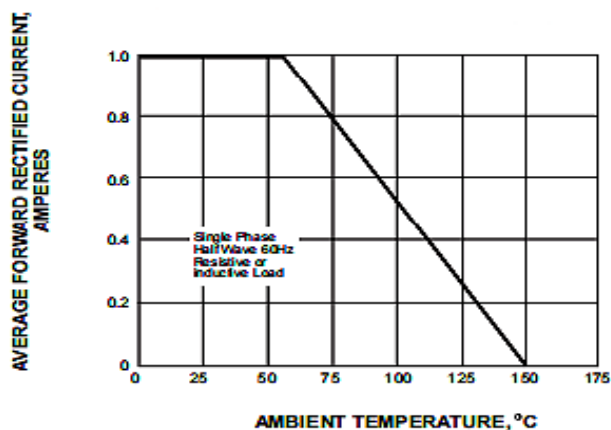


Fig 2: TYPICAL INSTANTANEOUS FORWARD CHARACTERISTICS

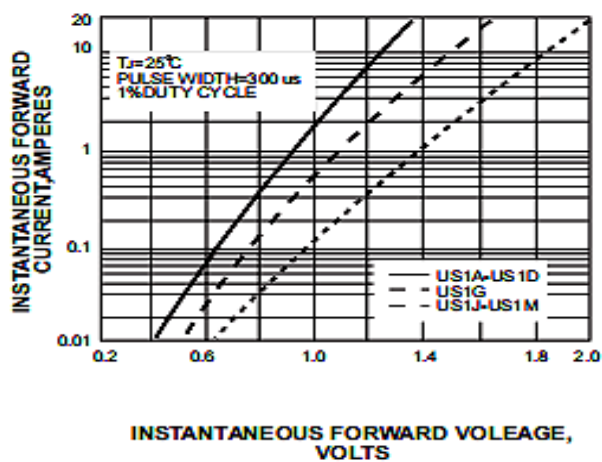


Fig 3: TYPICAL JUNCTION CAPACITANCE

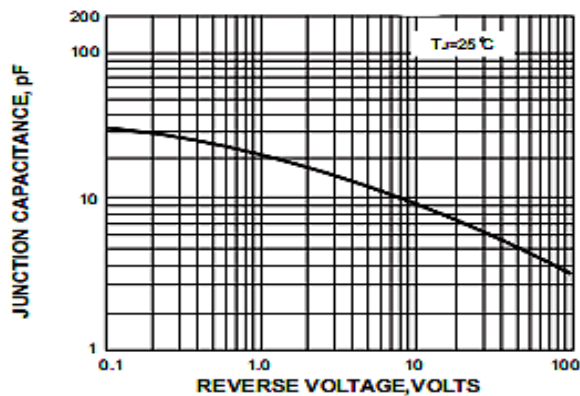


Fig 4: MAXIMUM NON-REPETITIVE PEAK FORWARD SURGE CURRENT

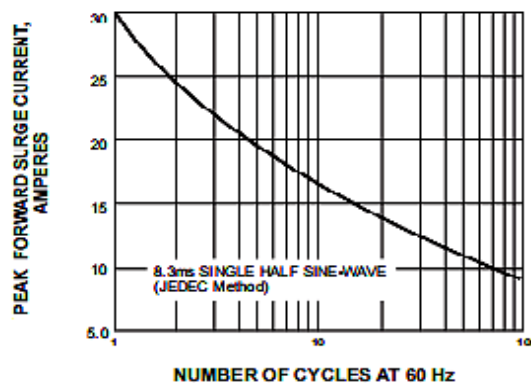


Fig 5: TYPICAL REVERSE CHARACTERISTICS

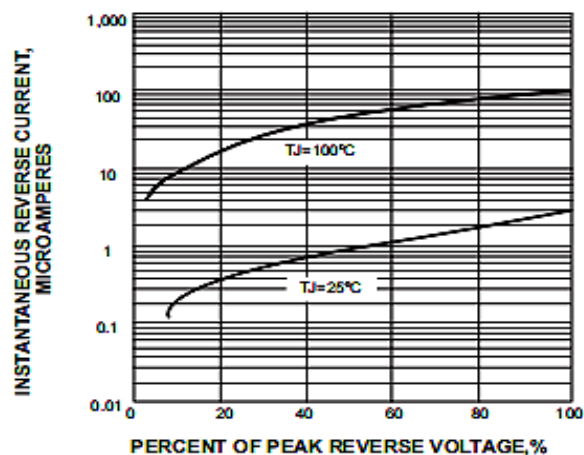
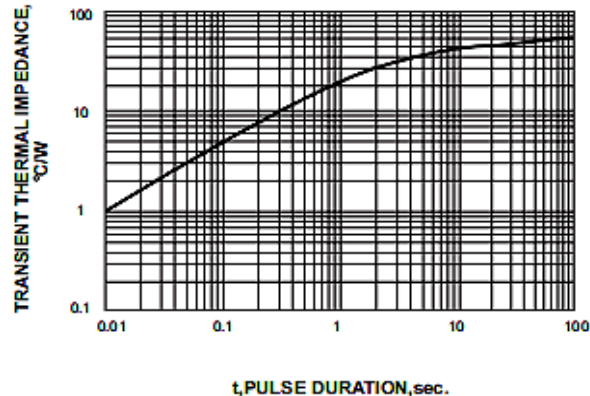


Fig 6: TYPICAL TRANSIENT THERMAL IMPEDANCE





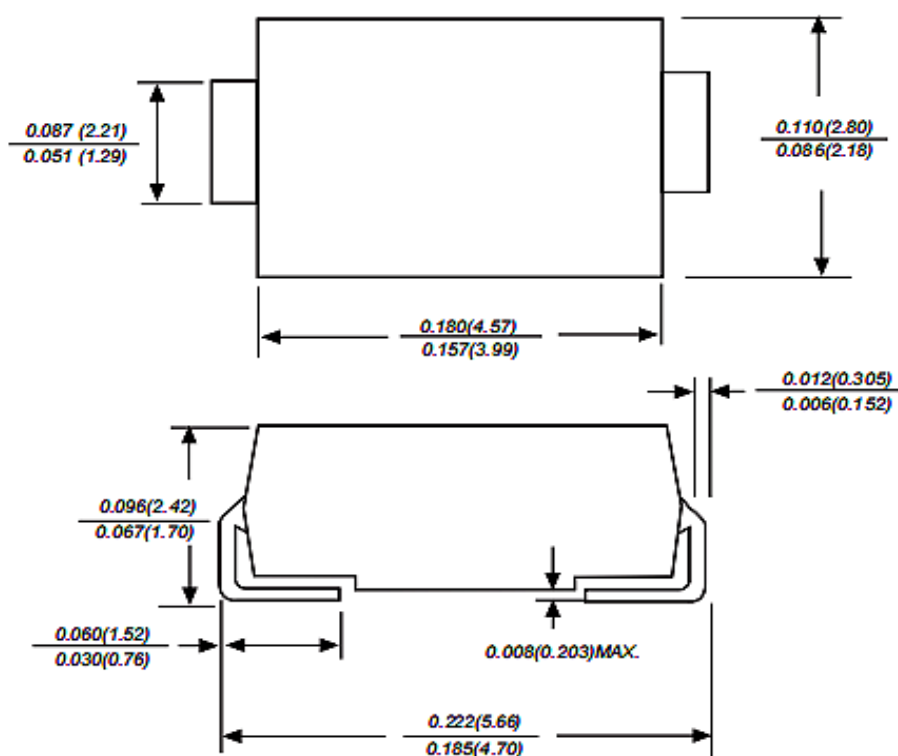
Continental Device India Pvt. Limited

An IATF 16949, ISO9001 and ISO 14001 Certified Company



## Package Detail

DO-214AC (SMA) Plastic Package



Dimensions in inches and (millimeters)

## MECHANICAL DATA

**Case:** JEDEC DO-214AC molded plastic body

**Terminals:** Plated axial leads, solderable per MIL-STD-750, Method 2026

**Polarity:** Color band denotes cathode end

**Mounting Position:** Any

**Weight:** 0.058 grams

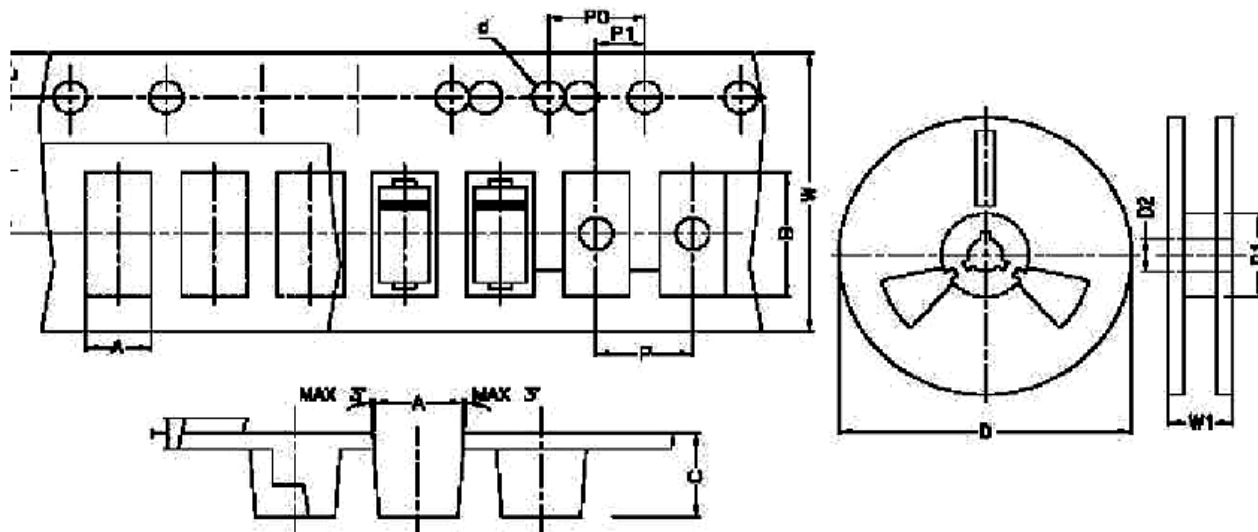


Continental Device India Pvt. Limited

An IATF 16949, ISO9001 and ISO 14001 Certified Company



## Package & Reel Taping Specification



ITEM	SYMBOL	SPECIFICATION (mm)	SPECIFICATION (Inch)
CARRIER WIDTH	A	3.2 MAX	0.125 MAX
CARRIER LENGTH	B	7.8 MAX	0.307 MAX
CARRIER DEPTH	C	4.5 MAX	0.177 MAX
SPROCKET HOLE	d	1.5 ±1.00	0.58 ±0.004
REEL OUTSIDE DIAMETER	D	178.0 ±2.00	7.00 ±0.079
REEL INNER DIAMETER	D1	50.0 MIN	1.989 MIN
FEED HOLE DIAMETER	D2	13.0 ±0.50	0.512 ±0.020
SPROCKET HOLE POSITION	E	1.75 ±0.10	0.88 ±0.004
PUNCH HOLE POSITION	F	5.5 ±0.10	0.217 ±0.004
PUNCH HOLE PITCH	P	4.0 ±0.10	0.157 ±0.004
SPROCKET HOLE PITCH	PC	4.0 ±0.10	0.157 ±0.004
EMBOSSMENT CENTER	P1	2.0 ±0.05	0.078 ±0.002
OVERALL TAPE THICKNESS	T	1.1 MAX	0.043 MAX
TAPE WIDTH	W	12.0 ±0.30	0.472 ±0.12
REEL WIDTH	W1	10.4 MAX	0.724 MAX

US1A\_1M  
Rev02 15072021EEG



Continental Device India Pvt. Limited

An IATF 16949, ISO9001 and ISO 14001 Certified Company



## **Recommended Product Storage Environment for Discrete Semiconductor Devices**

This storage environment assumes that the Diodes and transistors are packed properly inside the original packing supplied by CDIL.

- Temperature 5 °C to 30 °C
- Humidity between 40 to 70 %RH
- Air should be clean.
- Avoid harmful gas or dust.
- Avoid outdoor exposure or storage in areas subject to rain or water spraying .
- Avoid storage in areas subject to corrosive gas or dust. Product shall not be stored in areas exposed to direct sunlight.
- Avoid rapid change of temperature.
- Avoid condensation.
- Mechanical stress such as vibration and impact shall be avoided.
- The product shall not be placed directly on the floor.
- The product shall be stored on a plane area. They should not be turned upside down.
- They should not be placed against the wall.

### **Shelf Life of CDIL Products**

The shelf life of products is the period from product manufacture to shipment to customers. The product can be unconditionally shipped within this period. The period is defined as 2 years.

If products are stored longer than the shelf life of 2 years the products shall be subjected to quality check as per CDIL quality procedure.

The products are further warranted for another one year after the date of shipment subject to the above conditions in CDIL original packing.

### **Floor Life of CDIL Products and MSL Level**

When the products are opened from the original packing, the floor life will start.

For this, the following JEDEC table may be referred:

JEDEC MSL Level		
Level	Time	Condition
1	Unlimited	≤30 °C / 85% RH
2	1 Year	≤30 °C / 60% RH
2a	4 Weeks	≤30 °C / 60% RH
3	168 Hours	≤30 °C / 60% RH
4	72 Hours	≤30 °C / 60% RH
5	48 Hours	≤30 °C / 60% RH
5a	24 Hours	≤30 °C / 60% RH
6	Time on Label(TOL)	≤30 °C / 60% RH



Continental Device India Pvt. Limited

An IATF 16949, ISO9001 and ISO 14001 Certified Company



## Customer Notes

### Component Disposal Instructions

1. CDIL Semiconductor Devices are RoHS compliant, customers are requested to please dispose as per prevailing Environmental Legislation of their Country.
2. In Europe, please dispose as per EU Directive 2002/96/EC on Waste Electrical and Electronic Equipment (WEEE).

### Disclaimer

The product information and the selection guides facilitate selection of the CDIL's Semiconductor Device(s) best suited for application in your product(s) as per your requirement. It is recommended that you completely review our Data Sheet(s) so as to confirm that the Device(s) meet functionality parameters for your application. The information furnished in the Data Sheet and on the CDIL Web Site/CD are believed to be accurate and reliable. CDIL however, does not assume responsibility for inaccuracies or incomplete information. Furthermore, CDIL does not assume liability whatsoever, arising out of the application or use of any CDIL product; neither does it convey any license under its patent rights nor rights of others. These products are not designed for use in life saving/support appliances or systems. CDIL customers selling these products (either as individual Semiconductor Devices or incorporated in their end products), in any life saving/support appliances or systems or applications do so at their own risk and CDIL will not be responsible for any damages resulting from such sale(s).

CDIL strives for continuous improvement and reserves the right to change the specifications of its products without prior notice.



CDIL is a registered trademark of

**Continental Device India Pvt. Limited**

C-120 Naraina Industrial Area, New Delhi 110 028, India.

Telephone +91-11-2579 6150, 4141 1112 Fax +91-11-2579 5290, 4141 1119

email@cdil.com www.cdil.com

CIN No. U32109DL1964PTC004291

US1A\_1M

Rev02 15072021EEG